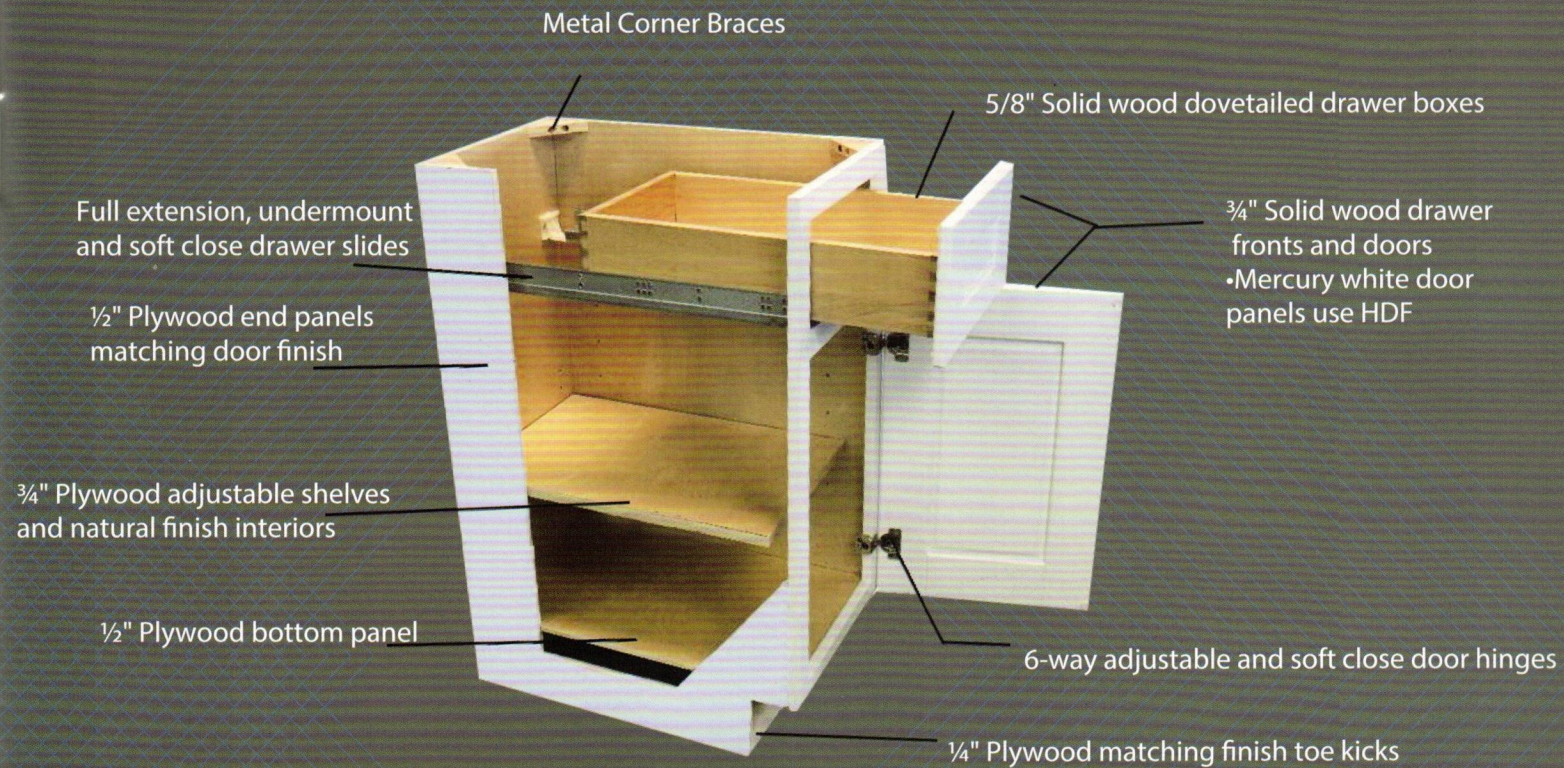


CABINET CONSTRUCTION SPECIFICATION



FEATURES

- All 1/2" plywood cabinet construction
- All 5/8" dovetailed hardwood drawer boxes
- All drawers have full-extension undermount slides
- All face frames are 3/4" solid wood
- All doors and drawer fronts are solid wood stile and rail construction
- All door hinges are nickel plated, 6-way adjustable with a soft close feature
- All shelves are 3/4" plywood with veneered edges
- All doors and drawer fronts are full overlay
- All upper wall cabinets can be inverted to change the door swinging direction
- All doors and drawer fronts are "5-piece" construction
- All side panels color match doors finish